

aft organisers

TS

Supplied By American Rigging Supply, Inc.

aft organisers for high loads

loads up to 2000kg (4400lbs) per sheave

Custom organisers to divert lines from a mixed bank of clutches & jammers.

TS features

Each organiser **custom** designed

High Strength PTFE lubricated Delrin bearings for maximum **efficiency** at high-loads

Tall sheaves allow a range of **vertical & horizontal** deflection angles to suit a mixture of clutch and jammer line exit heights

Design optimised for maximum strength to weight ratio

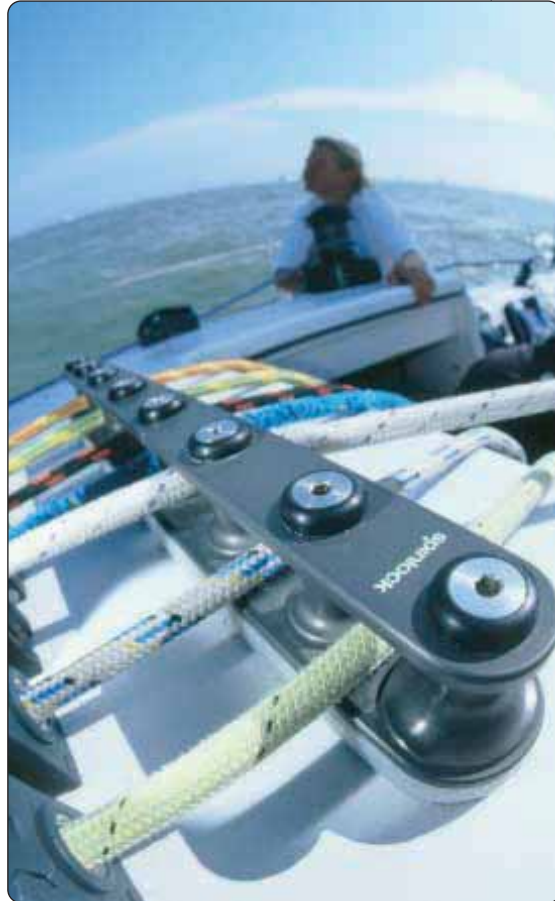
High strength fasteners included

Options include: high load end blocks, plate material (alloy, carbon), sheave size, fastener material (stainless steel, titanium)

Users include:

Open 60 Monos, Open 60 Tris, Alfa Romeo (RP98), Volvo 70, Software Mistress (Ker 36), TP52

For your custom TS design contact the Special Projects Team
spt@spinlock.co.uk



specifications

Model	Sheave Dia / Type	Max SWL per sheave
TS20	20mm (3/4") alloy	1500 kg 8mm (5/16")
TS22	22mm (7/8") alloy	2000 kg 10mm (3/8")
TS40	40mm (1"9/16) alloy	2000kg 10mm (3/8")

rope management

deck organisers

T-Series

Supplied By American Rigging Supply, Inc.

leading lines to and from the clutch

lines up to 14mm (9/16")
loads up to 1500kg (3300lbs)

T-series organisers lead multiple lines back from the mast to powerclutches.

T-Series features

Efficient bearing and minimal overall length
Reduces winch effort and increases halyard life

Modular end fairings for safe side loading

Sheave spacing identical to previous models

New asymmetric version for reduced deck space and weight saving

T38 and T50 can 'stack' for **limited deck area** or adding **extra capacity**

T50 will also 'stack' on TC50

TC50 organisers are **specially developed** for higher loads

New vari-camber feature: all T-Series organisers can be matched to the curve of the deck when fitted



specifications T-Series

Model	Sheave Dia/Type	Max SWL per sheave	Total SWL per unit	Line Dia
T38	38mm (1 1/2") composite	600kg (1320lbs)	No of sheaves x 300kg (660lbs)	12mm (1/2")
T50	50mm (2") composite	1000kg (2200lbs)	No of sheaves x 500kg (1100lbs)	14mm (9/16")
TC50	50mm (2") Alloy	1500kg (3300lbs)	No of sheaves x 750kg (1650lbs)	14mm (9/16")
TC50/D	50mm (2") Alloy	1000kg upper (2200lbs) 1500kg lower (3300lbs)	No of sheaves x 500kg (1100lbs) No of sheaves x 750kg (1650lbs)	14mm (9/16")

TC50



TC50/5

TC50/2, TC50/3, TC50/4, TC50/5, TC50/6
TC50/2Y, TC50/3Y, TC50/4Y, TC50/5Y, TC50/6Y

T38 & T50 (Symmetric versions)



T38/3

T38/2, T38/3, T38/4, T38/5, T38/6
T50/2, T50/3, T50/4, T50/5, T50/6

T38/Y & T50/Y (Asymmetric versions)



T38/4Y

T38/2Y, T38/3Y, T38/4Y, T38/5Y, T38/6Y
T50/2Y, T50/3Y, T50/4Y, T50/5Y, T50/6Y

TC50/D



TC50/2D

TC50/2D 4 sheave, TC50/2DY 4 sheave
TC50/3D 6 sheave, TC50/4D 8 sheave

winchfeeders

TWF

Supplied By American Rigging Supply, Inc.

for diverting lines

lines up to 12mm (1/2")
loads up to 1000kg (2200lbs)

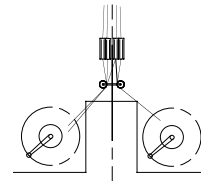
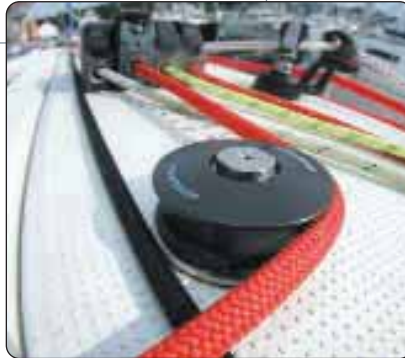
Fit a winchfeeder behind a clutch to divert a line to an alternative winch

Cross winching can be a better option for leading a line from a clutch on one side to a winch on the opposite side. The transfer is done quickly and efficiently using a winchfeeder sheave.

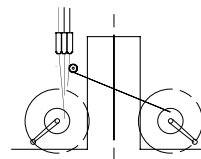
Very low 25mm (1") profile keeps winchfeeders safely out of the traffic.

Two winchfeeders may be **linked together** for a centred winch layout using crossbar accessory TWF-BAR.

Fit retaining clip TWF-RET to keep lines safely in place.



Cross winching with TWF-BAR



Cross winching with TWF winchfeeder

specifications

Model	Sheave Dia / Type	Max SWL per sheave	Max Line Dia
TWF/50M	50mm (2") Alloy	800kg (1760lbs)	12mm (1/2")
TWF/63M	63mm (2 1/2") Alloy	1000kg (2200lbs)	12mm (1/2")



TWF/50M

TWF/63M

bullseye

BE

low profile control line guides

lines up to 16mm (5/8")

Perfect for keeping long control lines tidy and clear of possible snags.

Strongly recommended for coachroof and foredeck applications where lines run between two fixed points with little horizontal or vertical deflection.

A good solution for guiding an extra line to the cockpit cleat or clutch when no sheave is free on the organiser where BE can be used as a deflector.



Users include

Dehler, J-Boats, Elan, IACC and Volvo 70

BE features

Self aligning until fastened

Single screw fixing

Stainless steel insert

6mm, 10mm, 12mm & 16mm sizes

Raked profile



BE06, BE10, BE12, BE16

specifications

Model	Max Line Dia
BE06	6mm (1/4")
BE10	10mm (3/8")
BE12	12mm (1/2")
BE16	16mm (5/8")

furling line leads

WL

Supplied By American Rigging Supply, Inc.

compact stanchion lead system

lines up to 12mm (1/2")
stanchion dia 25mm (1")

WL features

- Safe, low-profile design
- Reduces furling line friction
- Fairlead model WL/1 straight line guide for other stanchions
- Sheave model WL/2 for line entry and exit
- Unique tracker-ball angle adjuster for perfect sheave alignment
- Complete with fastenings: easy to fit, no need to remove stanchions
- Use XAS powerclutch or PX cam cleat to secure the furling line
- Replacement sheave available



WL/1

WL/2

specifications

Model	Line Dia	Max SWL at max line diameter
WL/1	12mm (1/2")	300kg (660lbs)
WL/2	12mm (1/2")	300kg (660lbs)

line parker

ZL

large diameter line parking

Developed for Superyacht applications
lines 16-24mm (5/8-7/8") loads up to 600kg (1320lbs)

- Park unloaded lines and halyards
- Rig or deck-mounted
- Port and starboard versions available
- Low profile
- Anodised aluminium construction

specifications

Model	Line Dia	Max SWL	Weight
ZL1624P	16-24mm (5/8-7/8")	600kg (1320lbs)	28g (1oz)
ZL1624S	16-24mm (5/8-7/8")	600kg (1320lbs)	28g (1oz)



rope management

high load