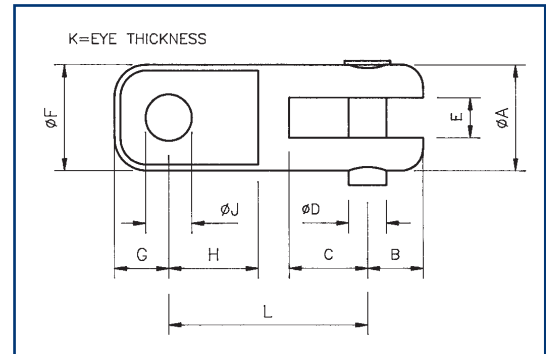


# TOGGLES

Supplied By;  
**American Rigging Supply, Inc.**  
[www.americanriggingsupply.com](http://www.americanriggingsupply.com)

Toggles are used particularly with fork ended rigging screws to permit full articulation at the end of a stay. This reduces the chance of fatigue failure or damage due to sideways impact. Toggle action is desirable at all stay ends, but is essential at both ends of sail carrying forestays. Toggles are also used at both ends of jib furling gears, and can be useful in lengthening a too short stay at the least expense.



## EYE - JAW TOGGLE

METRIC DIMENSIONS (mm)

SIZE REF	øA	B	C	øD	E	øF	G	H	øJ	K	L
EJ - 1/4	14.00	8.00	13.00	6.50	6.30	13.00	7.00	11.00	6.50	5.50	26.00
EJ - 5/16	19.00	10.00	16.00	7.90	7.90	16.00	8.30	13.00	8.10	6.70	34.00
EJ - 3/8	22.00	12.00	19.00	9.50	9.50	19.00	11.00	17.00	9.70	9.00	39.00
EJ - 7/16	28.50	14.00	22.00	11.11	11.10	23.00	12.50	19.50	11.30	9.50	47.00
EJ - 1/2	31.50	16.00	25.50	12.70	12.70	27.00	15.00	24.00	13.00	12.50	54.00
EJ - 5/8	37.80	20.00	32.00	15.80	15.80	33.00	18.00	28.00	16.20	13.50	64.00
EJ - 3/4	47.30	24.00	38.00	19.00	19.00	42.00	21.00	39.00	19.20	18.00	83.00
EJ - 7/8	54.00	28.00	44.50	22.20	22.20	47.50	25.00	41.00	22.50	21.00	96.00
EJ - 1	63.00	32.00	51.00	25.40	25.40	54.00	27.50	44.50	25.70	24.00	101.00
EJ - 1 1/8	69.60	36.00	57.00	28.50	28.50	57.00	30.00	50.00	29.00	25.70	123.00
EJ - 1 1/4	76.00	40.00	63.50	31.70	31.70	63.00	38.00	55.00	32.00	28.60	131.00
EJ - 1 3/8	82.50	44.00	70.00	35.00	35.00	69.00	42.00	61.50	35.00	31.30	145.00

USA - IMPERIAL DIMENSIONS (in)

NEJ-0808	0.551	0.315	0.512	0.256	0.248	0.512	0.276	0.433	0.256	0.217	1.024
NEJ-1010	0.748	0.394	0.630	0.311	0.311	0.630	0.325	0.512	0.319	0.264	1.339
NEJ-1212	0.866	0.472	0.748	0.374	0.374	0.748	0.433	0.669	0.382	0.354	1.535
NEJ-1414	1.122	0.551	0.866	0.437	0.437	0.906	0.492	0.768	0.445	0.374	1.85
NEJ-1616	1.240	0.630	1.004	0.500	0.500	1.063	0.591	0.945	0.512	0.492	2.126
NEJ-2020	1.486	0.787	1.260	0.622	0.622	1.299	0.709	1.102	0.638	0.531	2.52
NEJ-2424	1.862	0.945	1.496	0.748	0.748	1.654	0.827	1.535	0.756	0.709	3.268
NEJ-2828	2.126	1.102	1.752	0.875	0.875	1.870	0.984	1.614	0.886	0.827	3.78
NEJ-3232	2.480	1.260	2.008	1.000	1.000	2.126	1.083	1.752	1.012	0.945	3.976
NEJ-3636	2.740	1.417	2.244	1.122	1.122	2.244	1.181	1.969	1.142	1.012	4.843
NEJ-4040	2.992	1.575	2.500	1.248	1.248	2.480	1.496	2.165	1.260	1.126	5.157
NEJ-4444	3.164	1.632	2.589	1.292	1.294	2.664	1.456	2.316	1.309	1.232	5.709