

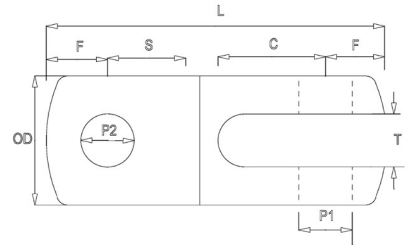
Rigging Components/Accessories

Free from structural welds which may reduce the strength and integrity of the product.
 Double headed Clevis Pins also available - suffix code with *DH*. E.g.. HTFF10*DH*.
 Toggles are manufactured from Solid Bar.

Bar Toggles

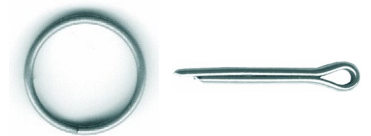
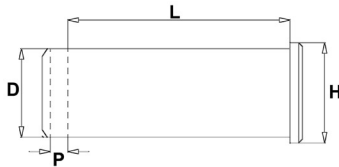
Metric Wire - 3mm to 26mm

**NO STRUCTURAL
 WELDS**



PRODUCT CODE	F	S	C	T	P1	P2	OD	L	WEIGHT
TOG03	7mm	10mm	13mm	6.3mm	6mm	6.3mm	14.3mm	42mm	22g
TOG04	9mm	13mm	16mm	8.0mm	8m	8.0mm	18.0mm	53mm	44g
TOG05	11mm	15mm	19mm	9.5mm	9.5mm	9.5mm	22.2mm	64mm	84g
TOG06	12mm	17mm	22mm	11.1mm	11mm	11.1mm	25.4mm	72mm	100g
TOG07	15mm	21mm	25mm	12.7mm	12mm	12.7mm	28.6mm	87mm	180g
TOG08	17mm	22mm	28mm	14.3mm	14mm	14.3mm	34.9mm	95mm	292g
TOG10	18mm	24mm	32mm	16.0mm	16mm	16.0mm	38.1mm	106mm	424g
TOG12	23mm	30mm	38mm	19.1mm	19mm	19.1mm	47.6mm	125mm	724g
TOG14	26mm	36mm	45mm	22.2mm	22mm	22.2mm	54.0mm	146mm	825g
TOG16	31mm	39mm	50mm	25.4mm	25.4mm	25.4mm	63.5mm	162mm	1790g
TOG19	33mm	47mm	58mm	28.6mm	28mm	28.6mm	69.9mm	184mm	2415g
TOG22	39mm	50mm	64mm	32.0mm	32mm	32.0mm	76.2mm	207mm	3229g
TOG26	44mm	54mm	70mm	35.0mm	35mm	35.0mm	82.5mm	227mm	5624g

Clevis Pins, Split Pins and Rings



PRODUCT CODE	D	P	H	L	WEIGHT	PIN RING
CP06	5.9mm	2.0mm	8.0mm	15.0mm	4g	SP-07/SR1
CP08	7.9mm	2.2mm	9.5mm	18.4mm	10g	SP-07/SR2
CP10	9.5mm	2.6mm	11.1mm	22.5mm	16g	SP-01
CP11	11.0mm	2.8mm	12.7mm	25.7mm	22g	SP-01
CP12	11.9mm	3.0mm	14.3mm	28.9mm	32g	SP-02
CP14	13.9mm	3.5mm	16.0mm	35.2mm	50g	SP-02
CP16	15.9mm	3.5mm	19.0mm	38.4mm	72g	SP-03
CP19	18.8mm	4.2mm	22.2mm	44.8mm	126g	SP-03
CP22	22.0mm	4.2mm	25.4mm	51.1mm	190g	SP-03
CP25	25.3mm	5.1mm	28.6mm	63.8mm	298g	SP-04
CP28	28.0mm	5.1mm	31.7mm	70.2mm	394g	SP-04
CP32	31.8mm	6.5mm	34.9mm	76.5mm	550g	SP-05
CP35	34.8mm	6.5mm	38.1mm	82.8mm	718g	SP-05

PRODUCT CODE	SIZE
Split Pins	
SP-01	3/32" x 3/4"
SP-02	1/8" x 1"
SP-03	5/32" x 1 1/4"
SP-04	3/16" x 1 1/2"
SP-05	1/4" x 2"
SP-06	1/8" x 1 1/2"
SP-07	5/64" x 5/8"
Split Rings	
SR-1	10mm
SR-2	16mm