

SPINNAKER POLES

Supplied By; American Rigging Supply, Inc.

Forespar® offers a complete and diversified line of spinnaker poles. We manufacture eight complete end styles from which we create a multitude of combinations to fit the needs of all sailors - racers or cruisers.

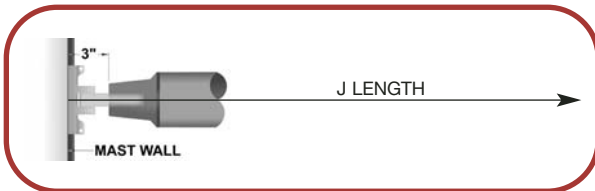
CUSTOM POLES & KITS

Forespar® offers "customized" poles built to specific dimensions, and also "kit" poles in which both ends are left loose to allow the marine dealer or yachtsman to finish the pole himself. End fittings and tubing are available separately for those who wish to assemble poles to their own specifications.

DETERMINING POLE LENGTH

The length of your spinnaker pole is determined by the yacht's "J" measurement. This is roughly the straight line distance from the front of the mast at deck level to the headstay. The "J" measurement is available from your sailplan, or contact **Forespar®** and we will be able to assist you in determining the proper length.

The "kit" lengths that are shown on the following pages are the maximum we recommend for each tubing diameter. However, oversized poles are available.



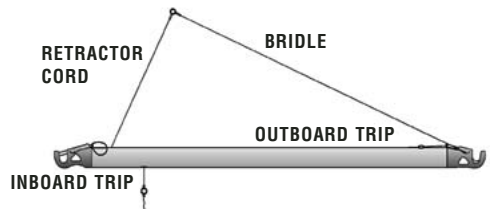
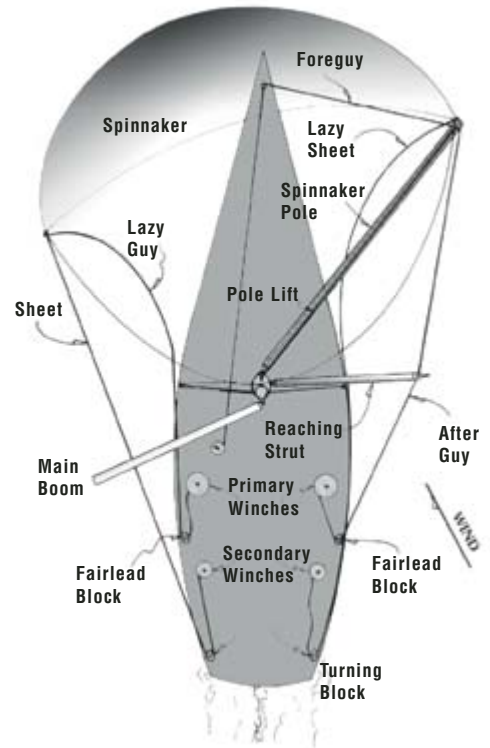
FOR POLES WITH OUR TS & UTS END FITTING, AND USING A **FORESPAR®** T-125-S CAR, 3" IS SUBTRACTED WHEN GIVEN A 'J' DIMENSION TO ESTABLISH POLE LENGTH.

RETRACTABLE BRIDLE OPTION

For custom spinnaker poles 3" in diameter or larger only. Featuring internal outboard-end trip lines, and a retractable topping lift, this rigging allows the sailor to smoothly complete a spinnaker jibe without detaching the pole from the mast.

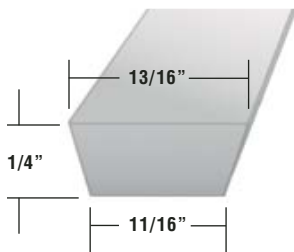
Part No. Description

300032 Retractable Bridle Option



T-TRACK INSERT

These four foot sections of polypropylene inserts are for use on Z-Spar (Z Diffusion) masts found on many boats sold in the U.S. They will fill the slot found in the front center of the forward face of spars designed for cars not suitable for use with **Forespar®** end fittings. They provide a base for the mounting of standard 1-1/4" "T" track to allow the use of our various 1-1/4" mast cars. They are easily drilled and will not promote corrosion under the track.



Part No. Model No.

339006 T-Track Insert (4 ft.)



SPINNAKER POLE END FITTINGS

Supplied By: American Rigging Supply, Inc.

FORESPAR'S ULTRA SERIES™

Represents the cutting edge in spinnaker pole end fitting technology. Designed for high strength, very low weight and resistance to wear and corrosion the **Ultra Series™** composite end fitting is perfect for aluminum or carbon fiber spinnaker poles and whisker poles. The **Ultra Series™** is the sailor's choice for inshore and offshore racing and cruising. Available with or without triggers. Maximum LOA Boat Outboard End - 43'. Maximum LOA Boat Inboard End - 36'. All larger boats use GP Series.

Part No. w/ trip*	For Pole Model No.	Fits Diameter	Tube I.D.	End Fitting Length	End Fitting Weight
304054	UXP-150-EF	1.5"	1.370"	2.750"	6.97 oz.
304050	UXP-200-EF	2.0"	1.870"	2.750"	6.97 oz.
304051	UXP-250-EF	2.5"	2.334"	3.125"	9.25 oz.
304052	UXP-300-EF	3.0"	2.835"	3.000"	11.92 oz.
304053	UXP-350-EF	3.5"	3.260"	3.625"	15.72 oz.

"UXP" External Trip



"UTR" Internal Trip



End Fitting Length

*Trip line is Spectra™ with terminal eyestay included. Length is sufficient for standard pole lengths based on diameter.

Part No. w/ trip*	For Pole Model No.	Fits Diameter	Tube I.D.	End Fitting Length	End Fitting Weight
304060	UTR-200-EF	2.0"	1.870"	2.750"	6.97 oz.
304061	UTR-250-EF	2.5"	2.334"	3.125"	9.25 oz.
304062	UTR-300-EF	3.0"	2.835"	3.000"	11.92 oz.
304063	UTR-350-EF	3.5"	3.260"	3.625"	15.72 oz.

*All ultra ends require minimum 1.5 inch i.d. rings to function properly. Undersized rings will damage ends and void warranty.

AUTOMATIC SOCKET END - TS & UTS

This unique "socket" type fitting automatically locks onto the mast toggle pin with a quick and easy push. The release is just as quick with a press of the lever (fits Forespar® mast toggle pins only).

"TS" Style



For Pole Part No.	Fits Model No.	Weight Diameter	Tube I.D.	w/o trip
309028	TS-300-EF (Aluminum)	3.0"	2.835"	1 lb 10 oz
304080	UTS-300-ULTRA	3.0"	2.835"	1 lb 4 oz
309031	TS-350-EF (Aluminum)	3.5"	3.260"	1 lb 13 oz
304081	UTS-350-ULTRA	3.5"	3.260"	1 lb 7 oz
405006	TS-400-EF (Aluminum)	4.0"	3.750"	2 lb 2 oz
309036	TS-450-EF (Aluminum)	4.5"	4.260"	2 lb 13 oz
304082	UTS-400-ULTRA	4.0"	3.750"	1 lb 7 oz
304083	UTS-450-ULTRA	4.5"	4.260"	1 lb 7 oz

OFFSHORE SERIES GRAND PRIX END GP & ULTRA SERIES™-GPS

The **UGPS** end fitting comes with a stainless steel lined throat. As always, this deluxe ocean racing end fitting features a wide flared throat. Both the GP and **UGPS** ends also feature our proven spring loaded piston system with roller for positive lock and release. **All UGPS and GP ends for outboard pole end use only. Will not work with mast cars.**

"UGPS" Style

MAXIMUM BOAT LENGTH 60'



Part No.	For Pole Model No.	Fits Tube Dia.	Tube I.D.	Weight w/o trip	End Fitting Length
304021	UGPS-300-EF-ULTRA	3.0"	2.835"	2 lb 6 oz	5.00"
304022	UGPS-350-EF-ULTRA	3.5"	3.260"	2 lb 9 oz	7.00"
304023	UGPS-400-EF-ULTRA	4.0"	3.750"	2 lb 3 oz	7.25"
304024	UGPS-450-EF-ULTRA	4.5"	4.260"	3 lb 3 oz	8.50"

"GP" Style

MAXIMUM BOAT LENGTH 75'



Part No.	For Pole Model No.	Fits Tube Dia.	Tube I.D.	Weight w/o trip	End Fitting Length
309030	GP-300-EF (Aluminum)	3.0"	2.835"	2 lb 12 oz	5.00"
309033	GP-350-EF (Aluminum)	3.5"	3.260"	3 lb 6 oz	7.00"
309035	GP-400-EF (Aluminum)	4.0"	3.750"	3 lb 14 oz	7.25"
309038	GP-450-EF (Aluminum)	4.5"	4.260"	4 lb 13 oz	8.50"

ULTRA SERIES™ GRAND PRIX OUTBOARD POLE END

Forespar's **ULTRA SERIES™** composite pole end fittings have been a proven, overwhelming success. Their light weight and resistance to corrosion answer racing and cruising sailor's needs for strength and reliability. The Grand Prix **ULTRA SERIES** include sizes suitable for yachts sixty feet LOA. The **ULTRA Grand Prix, UGPS**, model with a stainless steel throat liner insert weighs only 38 ounces.

SPINNAKER POLES

Supplied By: American Rigging Supply, Inc.

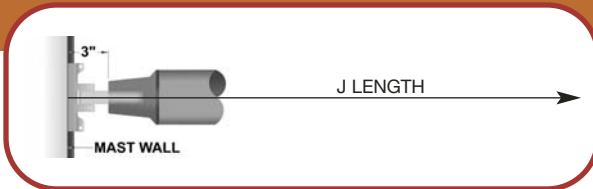
STANDARD SPINNAKER POLES

Our Standard Spinnaker Poles have a double bridle topping lift/foreguy system. Unless otherwise specified, all standard poles are supplied with the throat (jaw) facing upward. See price page for information regarding charges for special tubing.

STANDARD SPINNAKER POLES - KIT OR CUSTOM LENGTHS

(Requires a Forespar® Ring Style, Flange Style or Toggle Car See Pages 11 & 12)

Part No. Kit	Part No. Custom	Model Number	Shipping Weight	Kit Length (w/ends)	Description
304000	304100	UXP-150-UXP	6 lbs.	7'-8" Approx.	ULTRA Piston fitting both ends.
304001	304101	UXP-200-UXP	10 lbs.	9'-6" Approx.	ULTRA Piston fitting both ends.
304002	304102	UXP-200-UTR	11 lbs.		ULTRA Trigger one end/ ULTRA Piston other.
304003	304103	UTR-200-UTR	11 lbs.	2" Dia.	ULTRA Trigger fitting both ends.
304004	304104	UXP-250-UXP	14 lbs.	11'-6" Approx.	ULTRA Piston fitting both ends.
304005	304105	UTR-250-UXP	15 lbs.		ULTRA Trigger one end/ ULTRA Piston other.
304006	304106	UTR-250-UTR	15 lbs.	2 1/2" Dia.	ULTRA Trigger fitting both ends.
304007	304107	UXP-300-UXP	18 lbs.	13'-6" Approx.	ULTRA Piston fitting both ends.
304008	304108	UTR-300-UXP	19 lbs.		ULTRA Trigger one end/ ULTRA Piston other.
304009	304109	UTR-300-UTR	19 lbs.	3" Dia.	ULTRA Trigger fitting both ends.
304010	304110	UXP-350-UXP	33 lbs.	15'-5" Approx.	ULTRA Piston fitting both ends.
304011	304111	UTR-350-UXP	33 lbs.		ULTRA Trigger one end/ ULTRA Piston other.
304012	304112	UTR-350-UTR	34 lbs.	3 1/2" Dia.	ULTRA Trigger fitting both ends.



FOR POLES WITH OUR TS & UTS END FITTING, AND USING A FORESPAR® T-125-S CAR, 3" IS SUBTRACTED WHEN GIVEN A 'J' DIMENSION TO ESTABLISH POLE LENGTH.

CUSTOM OFFSHORE SPINNAKER POLES

The Forespar® Offshore Series spinnaker poles provide the serious racer with rugged, reliable and efficient equipment. These poles are designed to withstand the rigors of extended offshore racing.

Note: Due to the variety of personal preferences concerning bridle and topping lift rigging on offshore end type poles, no "standard" rigging is included on the poles below. If so specified, an end-to-end or a single topping lift can be supplied.

OFFSHORE POLES (Requires a Forespar® AT, T-125-S or AT-150-S Toggle Car See Page 11)

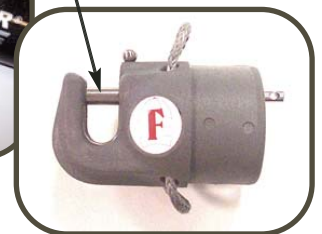
Part No. Custom	Model Number	Shipping Weight	Kit Length (w/ends)	Description
302028	TS-300-GP	22 lbs.	14'	Socket Inboard/GP Outboard.
304115	UTS-300-UTR	18 lbs.	13.5'	ULTRA Socket Inboard/ ULTRA Trigger Outboard.
304116	UTS-300-UGPS	19 lbs.	13.5'	ULTRA Socket inboard/ ULTRA GPS Outboard.
302032	TS-350-GP	35 lbs.	15.5'	Socket Inboard/GP Outboard.
304117	UTS-350-UTR	33 lbs.	15'	ULTRA Socket Inboard/ ULTRA Trigger Outboard.
304118	UTS-350-UGPS	34 lbs.	15'	ULTRA Socket inboard/ ULTRA GPS Outboard.
302036	TS-400-GP	47 lbs.	19'	Socket Inboard/GP Outboard.
304119	UTS-400-UGPS	44 lbs.	18.5'	ULTRA Socket Inboard/ ULTRA GPS Outboard.
302040	TS-450-GP	52 lbs.	21'	Socket Inboard/GP Outboard.
304120	UTS-450-UGPS	49 lbs.	20.5'	ULTRA Socket Inboard/ ULTRA GPS Outboard.

UTR 3 & 3.5 TRIGGER STYLE ENDS

All UTR 3 & 3.5 trigger style ends have adjustable screw for adjusting spring tension.



Anti-rotational pin allows activation at trigger end.



NEW

ALUMINUM TUBING & SPINNAKER POLE KITS

Supplied By: American Rigging Supply, Inc.

ADAPTING COLLARS

For sleeving **Forespar**® spinnaker pole end-fittings for use on larger diameter tubing, and other applications.



Part No.	Model No.	Adapts:
304049	AC-2 "ULTRA"	2.00" to 2.50"
304048	AC-3 "ULTRA"	3.00" to 3.50"
309020	AC-4 (Aluminum)	4.00" to 4.50"
309082	AC-5 (Aluminum)	5.00" to 3.00"
309083	AC-6 (Aluminum)	6.00" to 3.00"
304048	"ULTRA"	3.00" to 3.50"
304049	"ULTRA"	2.50" to 3.00"
304085	"ULTRA"	3.00" to 4.00"
304086	"ULTRA"	3.00" to 4.50"

ALUMINUM TUBING

Clear anodized to military specification (triple commercial). Prime marine alloy 6063-T6. All tubing sold in stock lengths.

Part No.	O.D.	Stock Lengths	Wall	I.D.	Wt./ Ft.
500015	1-1/4"	20'	.050"	1.150"	.22 lbs
500018	1-1/2"	22'6"	.065"	1.370"	.35 lbs
408002	1-1/2"	7'2"	.065"	1.370"	.35 lbs
301005	1-1/2"	7'6"	.065"	1.370"	.35 lbs
500020	2"	21'6"	.065"	1.870"	.47 lbs
408003	2"	7'2"	.065"	1.870"	.47 lbs
401004	2"	9'1"	.065"	1.870"	.47 lbs
301006	2"	9'4"	.065"	1.870"	.47 lbs
301058	2-1/2"	20'2"	.083"	2.334"	.74 lbs
301056	2-1/2"	9'	.083"	2.334"	.74 lbs
301057	2-1/2"	11'2"	.083"	2.334"	.74 lbs
301065	3"	11'2"	.083"	2.835"	1.00 lb
301072	3"	12'2"	.083"	2.835"	1.00 lb
301019	3"	13'	.083"	2.835"	1.00 lb
301063	3"	16'	.083"	2.835"	1.00 lb
301030	3"	23'4"	.083"	2.835"	1.28 lb
301061	3-1/2"	24'4"	.120"	3.260"	1.50 lb
403004	3-1/2"	12'2"	.120"	3.260"	1.50 lb
301059	3-1/2"	14'	.120"	3.260"	1.50 lb
301024	3-1/2"	15'	.120"	3.260"	1.50 lb
301003	4"	20'	.120"	3.750"	1.72 lb
301069	4-1/2"	20'	.120"	4.260"	1.94 lb

* CUSTOM TUBING IS ALSO AVAILABLE BY THE FOOT, CALL FOR PRICING



TECH. TIPS - ABOUT ULTRA STYLE END FITTINGS

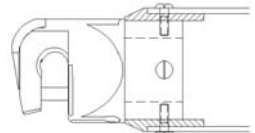
Proper attachment of Ultra style end fittings to carbon & aluminum tubes

Forespar® Ultra Series composite ends requires careful attention to fasteners style and placement. The Ultra material is extremely strong and durable at half the weight of their aluminum counterparts but require the use of pan head machine screws-not rivets or glue-for proper attachment to carbon or aluminum tubing. Drill and tap the holes.

Placement of the fasteners is also critical to the strength of the attachment to the pole, especially when an adapting collar (i.e. 2" ends on 2-1/2" tube) is used.

The S/S PHMS (pan-head machine screws) must be placed so they engage the adapting collar and the core of the end fitting to the tube. The fasteners for aluminum tubes should be placed 1/2" back from the end of the tube onto the (flange) collar on 2-1/2" and 3-1/2" sizes and the basic ends without collars on 2" & 3" sizes. Use a minimum of 4) 10-24 PHMS on ends 2", 2-1/2" and 3" and 5) on 3-1/2" to 4". 6) or more 1/4-20 PHMS may be needed on larger diameter tubes. On carbon tubes, place the fasteners 3/4" back from the end of the tube.

Be careful not to drill into the spring/piston housing on either style end (UTR & UXP) and not to hit the "set screws" on the sides (left and right side on the core) of the UTR style ends. Be sure to offset your holes pattern to clear these components and double check before you drill and tap! On carbon tubes, be sure not to over tighten and stress or crack the fiber laminate. If the carbon tube does not fit to the end fittings tight, wrap 2" masking tape around the core (bury of the end) until you achieve a snug fit.



PE-3SF & PE-3SC PAD-EYES

To complement our medium size Whisker Poles (LC 10-18); **Forespar**® designed the stainless steel **PE-3SF & PE-3SC Mast Pad Eyes**. Measuring 2-3/4" x 2", both pad-eyes have inside ring diameters of 1-5/8". **PE-3SF** is for flat mast surfaces. **PE-3SC** is slightly bent to better accommodate a curved mast.

#400001



#400002



#400012



Part No.	Model No.
400001	PE-3SF (Flat Base)
400002	PE-3SC (Curved Base)
400012	PE-3-SSF w/ struts (Flat Base)

SEE REPLACEMENT PARTS PAGE

SMALL BOAT SPINNAKER POLE KITS

Each kit includes anodized aluminum tubing, Nylon latching end fittings, nylon lanyard, pad-eye and epoxy kit. One end is loose so you can cut tubing to desired over-all length and then fasten end fitting with epoxy supplied. Less than 10 minutes to complete.



Part No.	Model No.	Size/Weight
303600	Mini-6	1" dia.-6' Kit/4 lbs.
303700	Mini-7	1-1/4" dia.-7' Kit/4.5 lbs.