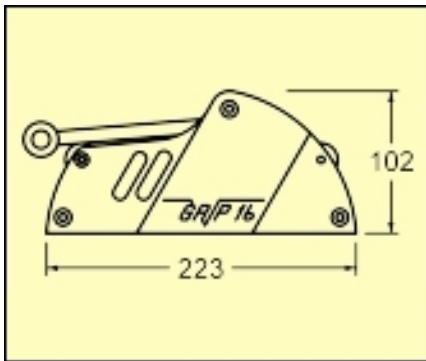


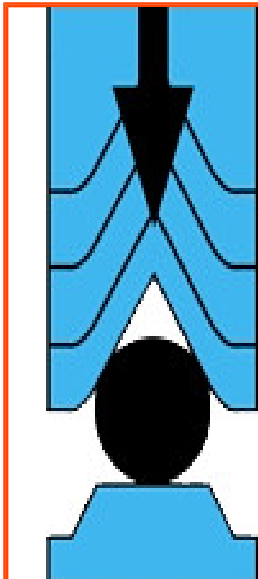


MAXI CLUTCHES

designed for the extreme loads of boats over 60 ft, are made with a hard black anodized aluminum structure, 316 s. steel is used for the mechanism and chromed bronze for the large "V" shaped cam.



MODEL	Ø LINE mm	WIDTH mm	W kg	WEIGHT kg	BOLTS N° x Ø mm
508.114	12 - 14	44	1700	1.40	2 x Ø10
508.116	14 - 16		2100		
508.118	16 - 18		2600		
508.120	18 - 20		3000		
508.122	20 - 22		3400		



NEW V-GRIP SYSTEM

The new "V-Grip" Stopper is designed to provide high holding power with no line slippage while allowing the line to be released under maximum load without the use of a winch. The line can also be tailed through the stopper without opening the mechanism. The stopper's holding strength is increased by providing a longer and "V" shaped cam mechanism that increases the bearing surface on the line. The design also reduces line cover damage and the crushing of composite lines such as Kevlar, Vectran and Spectra. The stopper is also excellent for standard Polyester braids.

Box structure is hard black anodized aluminum, bronze cam and s. steel mechanism.

Plus version: for lines from 8 to 14 mm. Maxi version: for lines from 12 to 22 mm.

Line retrieval can be achieved with the lever closed, and the cam mechanism guarantees easy opening even under heavy load.

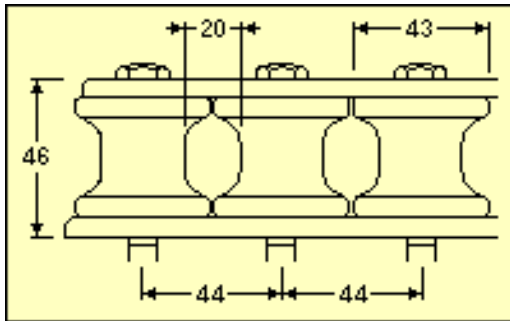


V-GRIP MAXI STOPPER ROLLER

This solution has been designed for the V-GRIP MAXI.

It allows manoeuvres to be guided from the stopper to the winch.

Materials: mekton sheaves, cover in hard black anodized aluminum.



MODEL	SHEAVES N°	LENGTH mm	WEIGHT kg	BOLTS N° x Ø mm
523.052	3	133	0.50	3 x Ø8
524.052	4	177	0.64	4 x Ø8
525.052	5	221	0.78	5 x Ø8
526.052	6	265	0.92	6 x Ø8
527.052	7	309	1.06	7 x Ø8



Supplied by American Rigging Supply, Inc.