



Supplied By; American Rigging Supply, Inc.



## Edson 418 Bulkhead Steerers

Edson engineers have designed Edson's 418 & 420 Bulkhead Steerers to be lightweight, versatile and rugged. For use on performance and cruising boats alike. Edson's Bulkhead Steerers feature Stainless Steel Needle Bearings to reduce friction, a Thru-Shaft Wheel Brake, all stainless construction and the ability to mount a Wheel Flange Adapter.



Morris 36

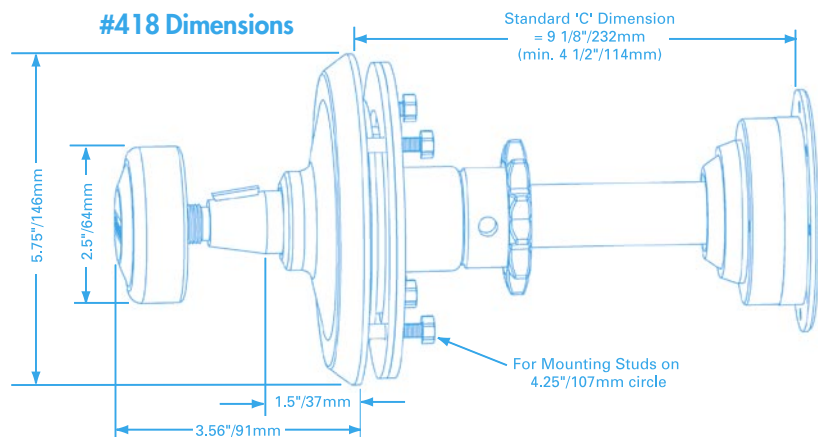
Photo by Onne van der Wal



### Tech Tip

'C' dimension is the standard length. Shaft is easily shortened by installer to a minimum of 4 1/2" (114mm)

- Perfect for Custom Installations Such as Bridge-Decks and Dual Steering Stations.
- Additional Shaft Space Available for Chain Driven Autopilots.
- Easily Installed.
- Non-Magnetic Materials.
- Stainless Steel Wheel Shaft.
- Type 316L Stainless Housing, Faceplate and Sprocket.
- Optional Wheel Flange available.
- Convenient Thru-Shaft Wheel Brake.
- Large Selection of Chain and Sprocket Sizes Available.
- Self-Aligning Forward Shaft Bearing provides ease of installation and alignment in pedestals.
- Configurations Available for all Edson Wheels.
- Pre-Installed Threaded Mounting Studs
- Bulkhead Gasket Included
- Engraveable Forward Bearing Faceplate Available.
- Wheel shaft easily shortened by installer for varying console depth applications.
- CE Compliant.



### GO TO

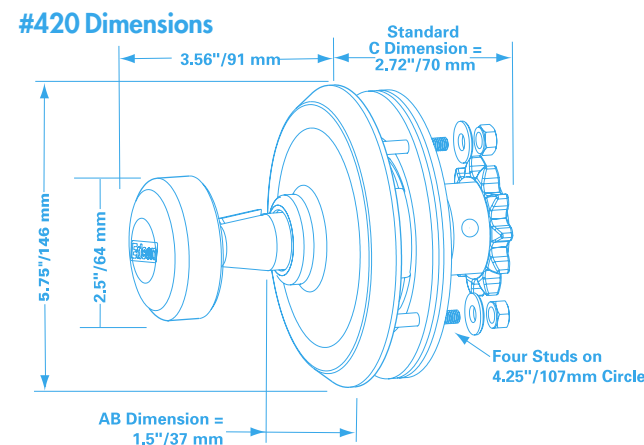
**Wheel Flange Adapter** available for mounting Edson's Diamond Series™ Ultra-Light and Carbon Wheels to tapered wheel shafts. Works with Thru-Shaft Brakes. See page 34



## Edson 420 Bulkhead Steerers

Designed for boats with built-in pedestal consoles, Edson's new Bulkhead Steerer features easy installation, Edson's super-sensitive Stainless Needle Bearings, a Thru-Shaft Wheel Brake, all-stainless construction and the ability to mount a Wheel Flange Adapter.

- Attractive Appearance.
- Integral Thru-Shaft Wheel Brake with Stainless Knob.
- Easily Installed.
- Non-Magnetic Materials.
- Stainless Wheel Shaft.
- Type 316L Stainless Housing, Faceplate and Sprocket.
- Large Selection of Chain and Sprocket Sizes available.
- Optional Wheel Flange available.
- Pre-installed Threaded Studs for easy installation.
- Metric Mounting Studs upon request.
- Stainless Backing Plate Included.
- Accepts all Edson Wheels.
- Ideal for multi-hulls and twin wheel configurations.
- Bulkhead Gasket Included
- CE Compliant.



### Tech Tip

'C' dimensions are standard lengths. Custom lengths are available. Contact Edson for additional information.



Spirit 54 relies on Edson's Bulkhead Steerer

Photo © 2006 Spirit Yachts Ltd. All Rights Reserved



#420 Stainless Bulkhead Steerer

### CHAIN SPROCKET DATA

Size	Chain Pitch		Sprocket Pitch Diameter		Chain Travel per Turns of Wheel		No. of Teeth
	inches	mm	inches	cm	inches	cm	
1-14	1/2	12.7	2.2	5.6	7.0	17.8	14
2-11	5/8	15.9	2.2	5.6	6.9	17.5	11
2-15	5/8	15.9	3.0	7.6	9.4	23.9	15
3-10	3/4	19.1	2.4	6.1	7.6	19.3	10

Additional Sprocket sizes available. Contact Edson Customer Service for custom requirements.

### BULKHEAD STEERER ORDERING GUIDE

Steerer Type	Product#	Chain Size	Sprocket Pitch	No of Teeth	Weight lbs	Weight kg
Stainless Bulkhead	418-2-11T*	5/8	2.2"	11	6.1	2.8
Tapered Shaft with Thru-Shaft Brake	418-2-15T	5/8	3.0"	15	6.1	2.8
	418-3-10T	3/4	2.4"	10	7.5	3.4
Stainless Bulkhead	419-2-11T*	5/8	2.2"	11	6.1	2.8
Tapered Shaft - Less Brake	419-2-15T	5/8	3.0"	15	6.1	2.8
	419-3-10T	3/4	2.4"	10	7.5	3.4

\*Standard sprocket size unless otherwise requested. Call for additional sprocket sizes. Straight Wheel Shafts are still available on special order. Contact Edson Customer Service.

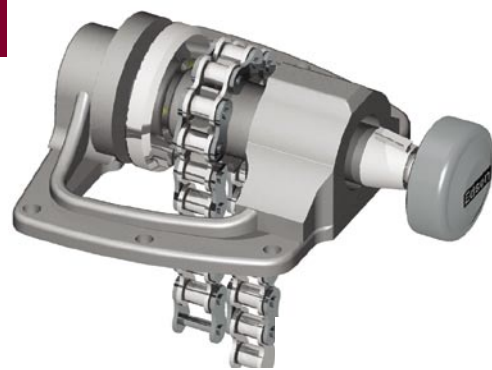
### BULKHEAD STEERER ORDERING INFORMATION

Steerer Type	Product#	Chain Size	Sprocket Pitch	No of Teeth	Weight lbs	Weight kg
Stainless Bulkhead	420-2-11T*	5/8	2.2"	11	7	3.2
Tapered Shaft with Thru-Shaft Brake	420-2-15T	5/8	3.0"	15	7	3.2
	420-3-10T	3/4	2.4"	10	8	3.6
Stainless Bulkhead	421-2-11T*	5/8	2.2"	11	7	3.2
Tapered Shaft - Less Brake	421-2-15T	5/8	3.0"	15	7	3.2
	421-3-10T	3/4	2.4"	10	8	3.6

\*Standard sprocket size unless otherwise requested. Call for additional sprocket sizes. Straight Wheel Shafts are still available on special order. Contact Edson Customer Service.

Edson's Needle Bearing Shelf Steerers are designed to provide precise steering control for larger boats. They are highly desirable due to their dependability, super sensitive "feel" and friction-free performance. Designed to be mounted on a shelf or horizontal flat surface, they are exceptionally strong and easy to install. Edson's Needle Bearing Steerers are available in a variety of choices to suit individual needs. Needle bearings and bearing liners are of high grade stainless. Used on a variety of boats including Whitbread Race winners, J-Boats and many other popular designs!

## Heavy Duty Needle Bearing Shelf Steerer

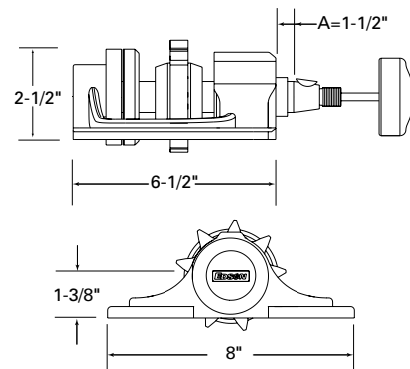


- Designed for use on offshore race/cruisers and heavy displacement yachts.
- Large 1" and 1 1/4" Stainless Roller Bearings & Liners are very efficient and provide exceptional feel and sensitivity.
- Convenient Thru-Hub Wheel Brake.
- Available for use with 5/8" (#50), 3/4" (#60) or 1" (#80) Roller Chain.
- Equipped with either a standard 1" tapered wheel shaft with 3/16" key or 5/4" wheel flange.
- Specify wheel type to be used when ordering.

### HEAVY DUTY SHELF STEERER ORDERING GUIDE

Steerer Type	Order #	Chain Size	Sprocket Pitch	No of Teeth	Weight	
					lbs	kg
Heavy Duty Needle Bearing Tapered Shaft with Thru-Shaft Brake	440-2-11T	3/4"	2.2"	11	9	4.1
	440-3-10T**	3/4"	2.4"	10	9	4.1
	440-3-15T	3/4"	3.6"	15	9.5	4.3
	440-3-17T	3/4"	4.1"	17	9.5	4.3
	440-4-10T	1"	3.2"	10	9.5	4.3
Heavy Duty Needle Bearing Tapered Shaft - Less Brake	441-2-11T	3/4"	2.2"	11	9	4.1
	441-3-10T**	3/4"	2.4"	10	9	4.1
	441-3-15T	3/4"	3.6"	15	9.5	4.3
	441-3-17T	3/4"	4.1"	17	9.5	4.3
	441-4-10T	1"	3.2"	10	9.5	4.3

\*\* Standard sprocket size unless otherwise requested. Call for additional sprocket sizes. Straight Wheel Shafts still available on special order. Contact Edson Customer Service.



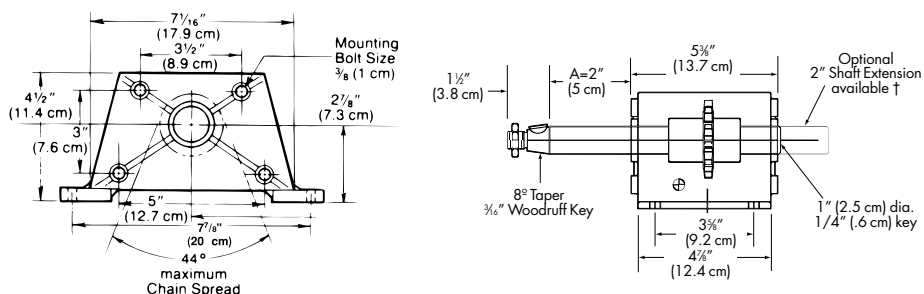
Optional Wheel Flange Order #698FL - see pg. 34

## Needle Bearing Shelf Steerer



Needle Bearing Shelf Steerer-Tapered Shaft and Thru-Shaft Wheel Brake #408T

- Designed for sailboats from 33' to 75'
- Thru-Shaft Brake
- Inverted aluminum "V" frame allows the chain to exit at a wide angle.
- Stainless Roller Bearings & Liners provide exceptional feel and sensitivity.
- Reduces the total number of sheaves required, thus increasing steering sensitivity.
- Can be used in a custom pedestal, bridge deck, powerboat console or bulkhead.
- Accepts any Edson #855 Sprocket.



### NEEDLE BEARING SHELF STEERER ORDERING GUIDE

Steerer Type	Order #	Chain Size	Sprocket Pitch	No of Teeth	Weight	
					lbs	kg
Needle Bearing Shelf Steerer With Thru-Shaft Brake	408-2-11T**	3/4"	2.2"	11	6	2.7
	408-2-15T	3/4"	3.0"	15	6	2.7
	408-2-21T	3/4"	4.2"	21	6.5	2.9
	408-3-10T	3/4"	2.4"	10	6.5	2.9
	408-3-15T	3/4"	3.6"	15	6.5	2.9

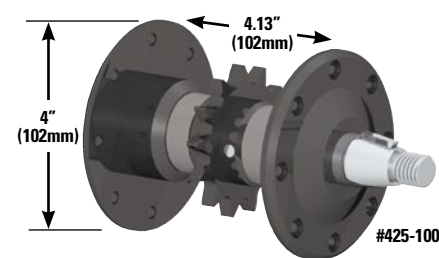
\*\* Standard sprocket size unless otherwise requested. Call for additional sprocket sizes. † Shaft extension available - specify when ordering. Additional charge applies. See Order #946. Straight Wheel Shafts are still available on special order. Contact Edson Customer Service.



Optional Wheel Flange Order #698FL - see pg. 34



## Ultra-Light Flange Steerer

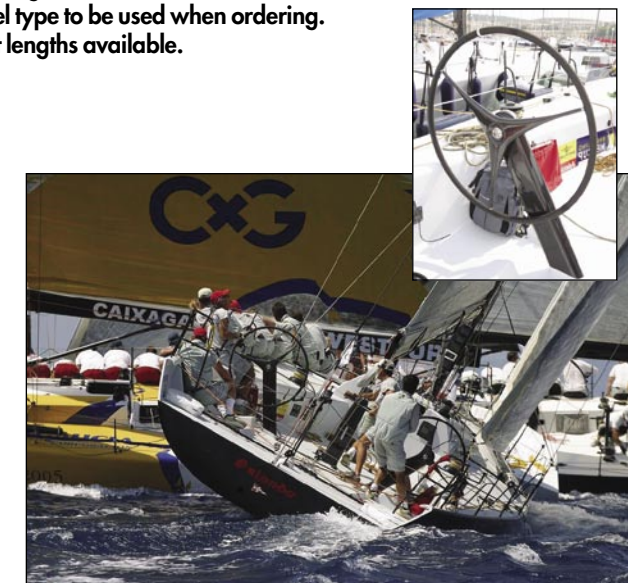


- Ultra-Light design for use on performance boats.
- Two sizes available: 1" wheel shaft for boats up to 40' or 1-1/4" wheel shaft for larger boats with higher steering loads.
- Black Hardcote aluminum mounting flanges and sprocket.
- Stainless Wheel Shaft, Needle Bearings & Bearing Liners provide exceptional feel and sensitivity.
- Equipped with either a standard 1" tapered wheel shaft with 3/16" key or 5/4" wheel flange.
- Specify wheel type to be used when ordering.
- Custom shaft lengths available.

### ULTRA-LIGHT FLANGE STEERER ORDERING INFORMATION

Steerer Type	Product #	Chain Size	Sprocket Pitch	No of Teeth	Weight	
					lbs	kg
1" Shaft - Size 1 (4" dia. faceplates)	425-100-2-11T*	3/4"	2.2"	11	3.16	1.44
	425-100-2-13T	3/4"	2.6"	13	3.2	1.46
	425-100-2-15T	3/4"	3.0"	15	3.25	1.48
1-1/4" Shaft - Size 2 (4.5" dia. faceplates)	425-125-3-10T*	3/4"	2.4"	10	4.27	1.94
	425-125-3-13T	3/4"	3.1"	13	4.60	2.09
	425-125-3-15T	3/4"	3.6"	15	4.82	2.19

\* Standard sprocket size unless otherwise requested. Call for additional sprocket sizes. Straight Wheel Shafts are still available on special order. Contact Edson Customer Service.



TP-52 Orlanda

## Transom Hung Rudder System for Small Boats

### Edson's Transom Hung Rudder Steering System

Edson's Transom Hung Rudder Steering System is a versatile design for many boats up to 27' with transom hung rudders. The system features Edson's unique Transom Conduit Bracket which anchors the conduit, incorporates the rudder stops and mounts directly to the boat transom as one unit. The system utilizes Edson's #336 pedestal so it can accept Edson's full line of accessories such as Engine Controls, Wheel Brakes, Tables and Drink Holders. Steering cables lead to port and starboard. Approximately 1 turn hardover to hardover through 72° of rudder travel. Max. wheel size 24".

Transom Hung Rudder Steering System - Order #332-C250

### Transom Hung Rudder Steering System Includes:

Qty	Order #	Description
1	336-5-211T	Pedestal
1	775-2S15B11	Chain and Wire Rope Assy.
1	868-2	Internal Conduit Bracket
1	329-48	Tiller Arm Assembly
2	797-6	Pull-Pull Conduit Assy.
4	646-4HEX	Pedestal Mounting Bolts
1	960-A-1156	Tiller Arm Backing Plate
2	618-0-250	Take Up Eyes
4	665-187	Wire Rope Clamps
1	960-B-645	Rudder Stop Plate
1	960-A-2087	Take Up Eye Pivot Pin
1	824-24	Transom Conduit Bracket Assembly
1	960-B-444	Transom Face Plate
1	960-B-446	Transom Boot

To complete your Steering System, add your choice of Edson Steering Wheel (24" maximum) and Accessories.

Straight Wheel Shafts are still available on special order. Contact Edson Customer Service.



The Catalina 250 is available with an optional Edson Transom Hung Rudder Steering System.



Photo courtesy of Catalina Yachts

Ideal for Boats with Transom Hung Rudders up to 27' / 8.5m!