



Type 316 Stainless Marine Eyes & Fork

These new marine and MS style eyes and forks are manufactured by Johnson in the USA on the latest CNC machinery. All fittings are T-316 stainless steel with the quality you expect from Johnson.

Marine Eyes - Machine Swage T-316

CAT. NO.	WIRE SIZE	PIN SIZE	THICKNESS	SAFE WORKING LOAD
12-201	3/32"	1/4"	7/32"	400 lbs.
12-202	1/8"	1/4"	7/32"	700 lbs.
12-203	5/32"	5/16"	9/32"	1100 lbs.
12-204	3/16"	3/8"	11/32"	1600 lbs.
12-205	7/32"	7/16"	13/32"	2100 lbs.
12-206	1/4"	1/2"	15/32"	2700 lbs.
12-207	9/32"	1/2"	15/32"	3500 lbs.
12-208	5/16"	5/8"	19/32"	4200 lbs.
12-209	3/8"	5/8"	19/32"	5900 lbs.
12-210	7/16"	3/4"	23/32"	8000 lbs.



Pins Not Included
see pages 42 & 43

MS Style Eyes - Machine Swage T-316

CAT. NO.	WIRE SIZE	PIN SIZE	THICKNESS	SAFE WORKING LOAD
12-211	3/32"	3/16"	1/8"	400 lbs.
12-212	1/8"	3/16"	3/16"	700 lbs.
12-213	5/32"	1/4"	3/16"	1100 lbs.
12-214	3/16"	5/16"	1/4"	1600 lbs.
12-215	7/32"	5/16"	9/32"	2100 lbs.
12-216	1/4"	3/8"	5/16"	2700 lbs.
12-217	9/32"	7/16"	5/16"	3500 lbs.
12-218	5/16"	7/16"	11/32"	4200 lbs.
12-219	3/8"	1/2"	3/8"	5900 lbs.



Pins Not Included
see pages 42 & 43

MS Style Fork - Machine Swage T-316

CAT. NO.	WIRE SIZE	PIN SIZE	OPENING	DEPTH FROM PIN CENTER	SAFE WORKING LOAD
12-221	3/32"	3/16"	7/64"	11/16"	400 lbs.
12-222	1/8"	3/16"	3/16"	3/4"	700 lbs.
12-223	5/32"	1/4"	13/64"	13/16"	1100 lbs.
12-224	3/16"	5/16"	17/64"	7/8"	1600 lbs.
12-225	7/32"	5/16"	19/64"	1"	2100 lbs.
12-226	1/4"	3/8"	5/16"	1-5/64"	2700 lbs.
12-227	9/32"	7/16"	21/64"	1-11/64"	3500 lbs.
12-228	5/16"	7/16"	23/64"	1-17/64"	4200 lbs.
12-229	3/8"	1/2"	3/8"	1-35/64"	5900 lbs.



Pins Not Included
see pages 42 & 43

Call for OEM and Bulk Pricing!

[Click here to contact American Rigging Supply, Inc.](#)

Toggle Jaws for Machine Swage

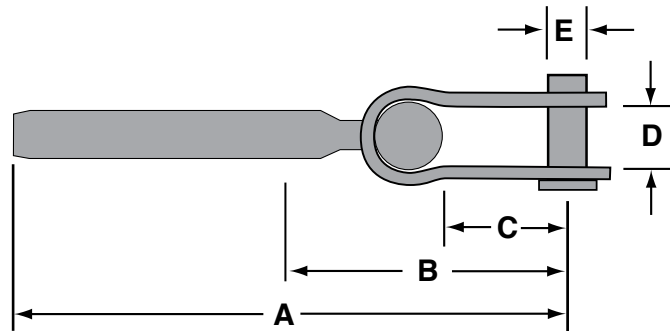
This fitting's universal toggle action prevents any adverse bending of wire. Pins included.



Toggle Nut Style



"T" Toggle Style



CAT. NO.	WIRE SIZE	A	B	C	D	E	F	BEFORE SWAGE DIA. *	AFTER SWAGE DIA. *	SAFE WORKING LOAD
17-203	3/32"	2-3/4"	1-1/2"	11/16"	1/4"	1/4"	5/8"	.218	.190	1000 lbs
17-204	1/8"	3"	1-1/2"	11/16"	1/4"	1/4"		.250	.219	1000 lbs
17-214**	1/8"	2-7/8"	1-5/16"	7/8"	1/4"	1/4"		.250	.219	1000 lbs
17-205	5/32"	3-1/4"	1-1/2"	11/16"	1/4"	1/4"		.297	.250	1000 lbs
17-205-2	5/32"	3-3/4"	2-1/8"	1"	5/16"	5/16"	3/4"	.297	.250	1600 lbs
17-215-2**	5/32"	4-1/2"	2-5/8"	1"	5/16"	5/16"		.297	.250	1600 lbs
17-206	3/16"	4-1/4"	2-1/4"	7/8"	3/8"	3/8"	7/8"	.359	.313	2800 lbs
17-216**	3/16"	4-3/4"	2-5/8"	1"	5/16"	5/16"		.359	.313	1600 lbs
17-207	7/32"	4-1/2"	2-1/4"	7/8"	3/8"	3/8"		.427	.375	2800 lbs
17-208	1/4"	4-3/4"	2-1/4"	7/8"	3/8"	3/8"		.494	.438	2800 lbs
17-209	1/4"	5-1/4"	2-5/8"	1-1/16"	1/2"	1/2"	1-1/8"	.494	.438	3500 lbs
17-210	9/32"	5-1/2"	2-7/8"	1-1/16"	1/2"	1/2"		.563	.500	3500 lbs
17-211	5/16"	5-3/4"	2-7/8"	1-1/16"	1/2"	1/2"		.635	.563	4200 lbs
17-212	5/16"	6-1/2"	3-1/4"	1-3/16"	5/8"	5/8"	1-3/8"	.635	.563	4200 lbs
17-213	3/8"	7"	3-1/4"	1-5/16"	5/8"	5/8"		.703	.625	5900 lbs

** With T-Toggle Jaw *All tolerances are: +.000 - .005 Dimensions shown are inches.

NOTE: Before and After swage dimensions are mil spec and conform to both our life line and rigging fittings with regard to all aspects except cable depth in fittings. (See chart on page 64.) The primary difference between life line and rigging fittings is the cable depth, although other factors exist. Always use rigging fittings when in doubt or wherever high load applications exist. Never exceed the safe working load.